



STARHOTELS®  
PREMIUM

Anderson  
MILANO



# Anderson

MILANO



## *Metropolitan chic*

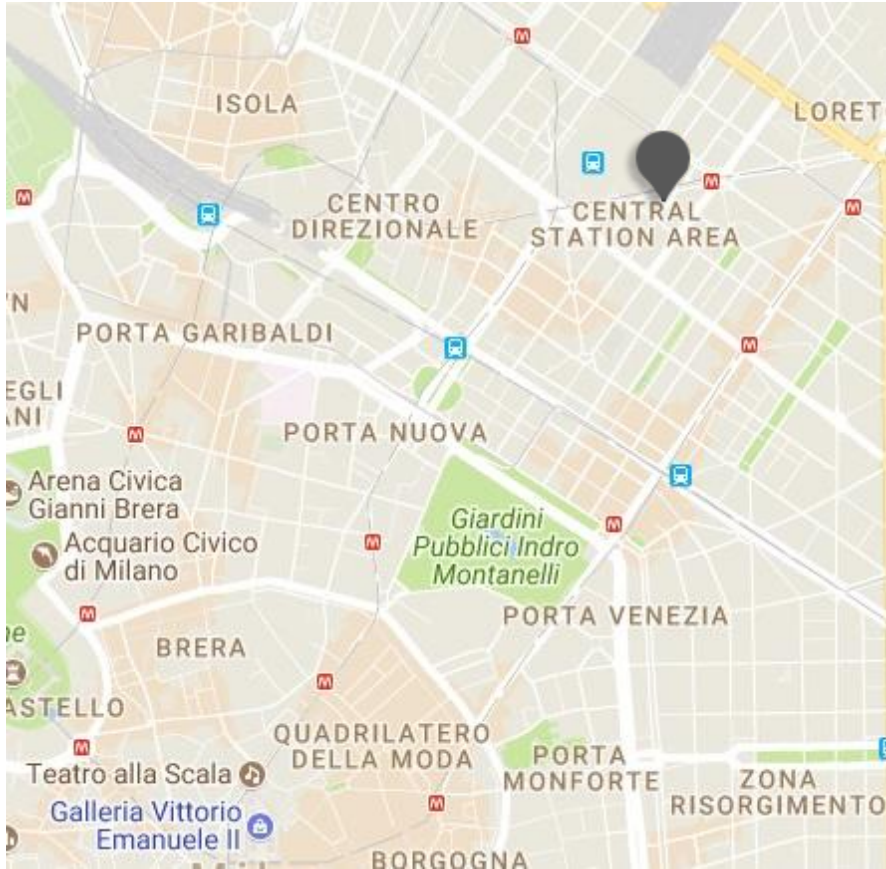
A landmark in its own right, just a few steps from the Central railway station, the Anderson is woven into the fabric of Milano's fashion scene.

With its metropolitan lounge and cosmopolitan atmosphere, it's a favorite with many of the country's leading designers. Tactile materials. Minimalist interiors.

Artful splashes of color. Each one of the 106 rooms has been carefully designed to fuse style and substance.

# Anderson

MILANO



## Location

Next to the Central railway station and a few minutes from the city centre

## Distances

### Railway station:

air terminal Km 0,1

**Highway:** Km 6

### Underground:

MM2 Caiazza - MM2 - MM3 Stazione Centrale

### Airport:

Linate Km 8 - Malpensa Km 50

### Fairgrounds:

Milano (City) Km 4 - Milano (Rho) Km 12

Piazza Luigi di Savoia, 20 - 20124 Milano - Italy

T +39 02 6690141 F +39 02 6690331

[anderson.mi@starhotels.it](mailto:anderson.mi@starhotels.it)

[starhotels.com](http://starhotels.com)



# Anderson

MILANO

## Restaurant & Bar

The Black Restaurant by Eataly and Bar by Eataly serves creative Mediterranean cuisine inspired by the north and south of Italy. Ingredients are lovingly and expertly sourced, bringing to the table the finest produce, which are also selected with the help of Eataly.



# Anderson

MILANO



## 106 Rooms

58 Superior  
47 Deluxe  
1 Junior Suite

Thoughtfully designed to combine comfort with contemporary chic, our 106 rooms showcase the best in Italian style.







## Meetings & Events

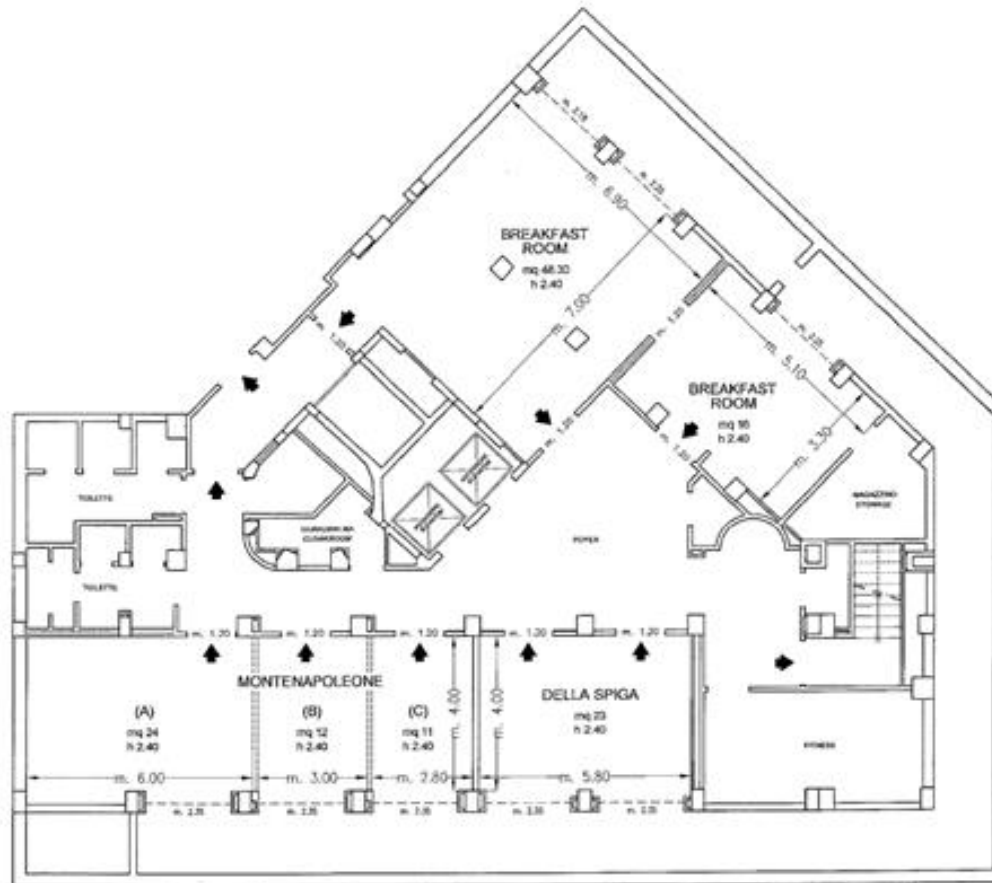
**Meeting rooms: 4**  
**Capacity (theatre style): 50 max**

Our 4 modern meeting rooms, for up to 50 people, and experienced team will help make your event one to remember.



# Anderson

MILANO



Piano -1 / Basement

- ◆ Uscite di sicurezza / Emergency Exits
- - - - Finestre / Windows
- ..... Paredi mobili / Modular Walls
- Colonne / Columns

# Anderson

MILANO

Sale riunioni Meeting rooms	Area mq Area sq.ft.	Lung. x larg. mt. L x W ft.	altezza mt. height ft.	teatro theatre	banchi scuola class room	Tavolo unico ferro di cavallo conference table/ U-shape	cabaret style^	cocktail reception	banchetto banquet
Montenapoleone (A)	24 258,24	6,00x4,00 19,68x13,12	2,4 7,87	15	-	12-8	-	-	-
Montenapoleone (B)	12 129,12	3,00x4,00 9,84x13,12	2,4 7,87	-	-	8	-	-	-
Montenapoleone (C)	11 118,36	2,80x4,00 9,19x13,12	2,4 7,87	-	-	8	-	-	-
(A+B)	36,5 392,74	9,00x4,00 29,53x13,12	2,4 7,87	35	16	20-15	-	-	-
(B+C)	23,5 252,86	5,80x4,00 19,03x13,12	2,4 7,87	15	-	12-8	-	-	-
(A+B+C)	50 516,48	11,80x4,00 38,71x13,12	2,4 7,87	50	24	26-24	-	-	-
Della Spiga	23 247,48	5,80x4,00 19,03x13,12	2,4 7,87	15	-	12 - 8	-	-	-
Black Restaurant <sup>o</sup>	48 516,48	6,90x7,00 22,64x22,97	2,4 7,87	-	-	-	-	50	34
Breakfast Room	64,3 691,87	12,00x7,00 39,37x22,97	2,4 7,87	-	-	-	-	-	50

<sup>o</sup> Luce naturale / Daylight